

# Support Our Region's TOP Scholars!

## 2007-2008 Scholarship Winners

With eyes trained on future health-care studies, six high-achieving high school seniors and two accomplished college students earned Northern Plains Eye Foundation scholarships for the 2007-2008 academic year. This is the third year NPEF has awarded Health-Care Education Scholarships to deserving students pursuing health-care fields of study. The scholarships are based on academic merit, involvement in health-care related activities or studies, leadership, school activities and community service.

### Congratulations to the six High School recipients



Rachele Schrader  
\$1500  
Colome HS  
SD State University  
Biology/Ocular Oncology



Jerika Ihnen  
\$1500  
Lennox HS  
SD School of Mines  
Chemistry/Ophthalmology



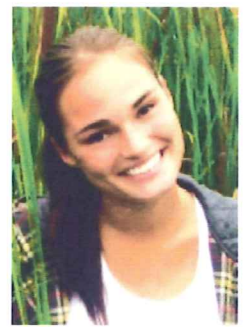
Lindsey Daly  
\$1000  
Groton, Area HS  
U of Minnesota  
Twin Cities  
Pre-Optometry



Jessica Lauer  
\$1000  
Sturgis Brown HS  
Colorado Christian  
University  
Biology/Chemistry



Hannah Steele  
\$1000  
Alliance HS, NE  
Chadron State College  
Nursing



Marie Hiemstra  
\$1000  
Sioux Falls Christian HS  
U of Michigan, Ann Arbor  
Pre-Medicine

### Congratulations to NPEF's two Continuing scholars:



Elise In't Veld  
3rd Year Winner  
\$1000  
BH Regional Eye Institute Sponsored  
Scholarship  
Belle Fourche, SD  
SD State University  
Biology/Ophthalmology



Maggie Skiles  
2nd Year Winner;  
\$1000  
Scottsbluff, NE  
Western Kentucky University  
Biology/Pediatric Ophthalmology