

NPEF PLEDGES \$12,500 FOR HEALTH-CARE SCHOLARSHIPS



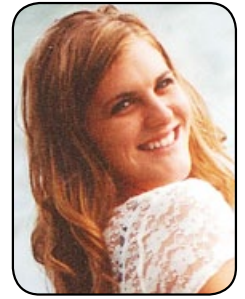
Kaylee A. Bahr
Hometown:
Aberdeen, SD

Northern Plains Eye Foundation (NPEF) has selected twelve recipients for its 2011-2012 scholarships. Nine **Health-Care Education Scholarships** were awarded to high school seniors pursuing full-time health-care related studies at a college, university or technical institution, as well as three **Continuing Health-Care Education Scholarships** to students returning to post-secondary health-care related studies.

Scholarship recipients were selected from a distinguished group of 88 outstanding applicants, with impressive academic credentials, scholastic standing, extracurricular activities, personal statements, and letters of recommendation. We congratulate each of our winners and wish them continued success as they further their academic growth in the coming years.

NPEF's Health-Care Education Scholarship Committee extends special congratulations to Steven Turpin, the first recipient of the Dr. Paul L. Zimmerman Memorial Health-Care Education Scholarship. This distinguished award is presented in honor of Dr. Paul L. Zimmerman, a member of NPEF Board of Directors and Ophthalmologist with Black Hills Regional Eye Institute, who lost a brave fight with malignant melanoma of his right eye earlier this year.

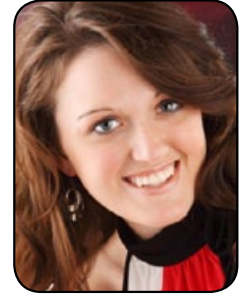
This is the seventh year NPEF has awarded scholarships for ongoing college study to high school seniors and former scholarship recipients from within our 5-state service area (northeast Wyoming, northwest Nebraska, southeast Montana, southwest North Dakota, and all of South Dakota). Since the **Health-Care Education Scholarship** program's inaugural year, NPEF has awarded sixty-four Health-Care Education Scholarships totaling \$60,500 to students pursuing full-time undergraduate health-care studies, reflecting NPEF's strong commitment to the education of future eye care and health-care professionals. If you are interested in contributing to this scholarship fund, please contact the Foundation office at (605) 716-6733.



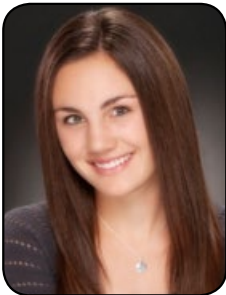
Julia D. Scherbenske
Hometown:
Steele, ND



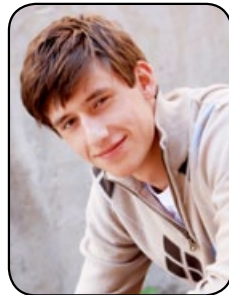
Natalie F. Reynen
Hometown:
Milbank, SD
 Sponsored by
 Rapid City Downtown &
 Rushmore Lions Clubs



Rebecca A. Runge
Hometown:
Wessington, SD
 Sponsored by
 Black Hills Power



Brianna L. Caton
Hometown:
Billings, MT



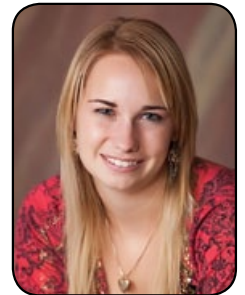
Jeffrey S. Ebnan
Hometown:
Sioux Falls, SD



Julianna S. Diddle
Hometown:
Brookings, SD



Gabriel J. Orion
Hometown:
Brookings, SD



Bethany A. Lueck
Hometown:
Arcadia, NE

2011-2012 CONTINUING SCHOLAR SCHOLARSHIP RECIPIENTS



Nicolas R. Stakel
Hometown:
Burke, SD



Steven A. Turpin
Hometown:
Gillette, WY
*Dr. Paul L. Zimmerman Memorial
 Health-Care Education Scholarship Recipient
 Sponsored by
 Black Hills Regional Eye Institute*



Ashley P. Schmidt
Hometown:
Mitchell, SD
*Sponsored by
 Jeffrey L. Rausch, Denette K. Eisnach,
 and Jill M. Hart, Doctors of Optometry*

